

ABYLON



ABYLON

We are on the same journey

ABYLON



abylon

5 years

30 customers

105 successful project



main areas

Enterprise consulting:

- Collaboration
- BI



team

30 employees

Abylon Consulting is one of the most innovative IT Consulting company in our region focusing on modern collaboration technologies, custom development and data analytics. Our passion for cutting-edge technologies and experience with customers across many industries helped us envision and develop new products and solution offerings.

main partners



Gold partner – Data Analytics

Silver partner – Cloud platform

Quest[®]

Recognized as an authorized Quest Reseller

main customers - 2020

Financial



Energy



Healthcare



Government



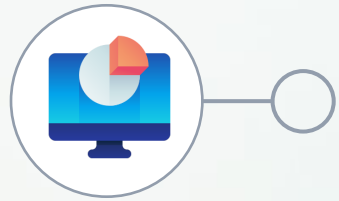
IT



Other



Abylon products and solutions



RAPID ANALYTICS

Rapid data warehouse and analytics automation tool



VIDEO CC

Video Call Center



RAPID PLANNING

PowerBI based planning



DOCUFLOW

Enterprise document management



MAP

Map visualization



MOTIV8

Digital motivation



RAPID ANALYTICS

Best-in class rapid data warehouse and analytics automation tool for Microsoft SQL Server, PostgreSQL and Azure from design and implementation to operationalization.

Key features



BEST-IN-CLASS METADATA LAYER

- Easy configuration of source systems, tables and processes
- Automated schema mapping to different logical layers
- Automated schema checks and data quality checks

Reduces implementation time by 80%

INDUSTRY PROVEN DWH / DATA LAKE AUTOMATION TEMPLATES

- STAGE, DWH and ETL and test-case generation based on metadata
- Automated usage of advanced optimization techniques supported by the platform (columnstore, partitioning, indexes)

Working solution in production in just 4 weeks

DEVOPS AND AGILITY

- Azure DevOps, PowerShell and Git based toolset
- Agile deployment to various environment, continues integration
- Best-in-class monitoring solution designed for data warehouse operations

Reduces implementation cost up-to 80%

DATASHEET

Related products

Microsoft SQL Server, Microsoft Analysis Services, Power BI, Azure

References





RAPID PLANNING

Using our cutting-edge write-back technology, our customers can build the best corporate performance management platform using a single pane of view for business planning, forecasting and what-if analytics.

Key features



MAIN FEATURE

- Excel based UI for Planning
- Integrated with well known Excel functionality (coloring, formulas)
- Flexible templates
- (P&L, CF, COGS, Intercompany, ...)
- Built-in workflows, Email notification, Power BI reports

PLAN VERSIONS, SCENARIOS

- Detailed history: Each time a plan is saved, a new version of the plan is created in the backend database
- Easy comparisons: It is possible to compare plan versions using customizable Power BI reports and cubes
- Scenarios: (multiple active plans) should be handled transparently

PLATFORM

- Our technology integrates deeply with Microsoft Power BI and Power Platform toolset to make it the best data analytics solution of our time.
- Cross Platform: Mac, Windows, Office Online support

DATASHEET

Related products

Microsoft Power BI, Power Platform toolset

References



ABYLON



MAP

Map visualization tools and Spatial AI fuels digital transformation for some of the most complex businesses from country – world wide infrastructure providers. Our Microsoft Power BI based solution gives analysts an easy toolset with domain specific visualizations to make your data speak in the context of our customer’s line based physical infrastructure.

Key features

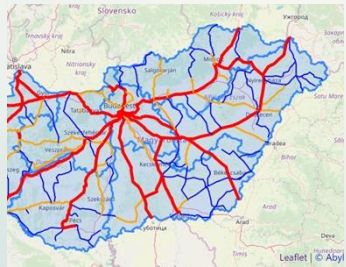


VISUALIZATION FUNCTIONS

- Draw active map based on coordinates in GPS: Lines and Circles
- Visibility of a section (based on PowerBI context)
- Color and Width attributes for lines
- Basic tooltip (multiline bubble based on fields)
- Background Base map – Leaflet compatible providers, opstreetmap, mapbox, none
- Draw active maps based on GeoJson Url
- Multiple tooltips for presentations - Ability to show multiple tooltips for presentations

FLEXIBLE ARCHITECTURE

- Abylon Spacial Data Lake
- Abylon GEO-JSON Server
- Abylon AI layer



DATASHEET

Related products

Microsoft PowerBI

References





VIDEO CC

The video call center is easily reachable from your website. There is no need to install any application - by a simple click you can enter video customer service.

Key features



CUSTOMER FRIENDLY

- Modern interface
- Browser based, zero software
- Installation compatible with any website
- Modern, available on every mobile device

OPERATOR FRIENDLY

- Process control customizable for call types
- Integrated, dynamic script panel
- Displaying customer and transaction data
- Screen layout adapted to different call types

OTHER FEATURES

- Out of the box scenarios: Call Center, Video Bank, Video Doctor
- AI based emotion perception
- Fraud detection

DATASHEET

Related technologies

WEB RTC

References





DOCUFLOW

Abylon Docuflow product is a perfect solution for digitalizing the reviewing and approval processes of internal documents

Key features



MAJOR FUNCTIONALITY

- Detailed level feedbacks and their consolidation (comments in Word, Excel, PowerPoint, PDF documents)
- Custom workflows
- Substitution
- Advanced security for handling confidential documents

SCENARIOS

- Regulation
- Leadership submissions
- Contract management

INTEGRATION

- Office 365 – SharePoint based document management
- Cloud and On-premise
- Power Automate based workflows

DATASHEET

Related technologies

Office 365, SharePoint, Microsoft Azure

References





MOTIV8

Abylon Motiv8 is a completely new approach to help in improving employee motivation.

Key features



METHODOLOGY

- Complete methodology for build a digital motivation system
- Align business objectives with rewards

IT SOLUTION

- Mobil Application for employees
- Fully customizable rule system
- Change Center – monitoring results

SOLUTION CATEGORIES

- Onboarding
- Training and development
- Sale
- Innovation
- Service center
- Collaboration



ABYLON

DATASHEET

Related products

Microsoft Azure

References

AVIS



